



A | S E R I E S

NEW

## THE ALL NEW A SERIES DUAL FUNCTION DISPLAYS WITH HIDDEN EXTRAS!



For once you'll want hidden extras ... built-in GPS sensor, HD Digital fishfinder module and Navionics cartography pre-installed. Who says you don't get something for nothing in life.

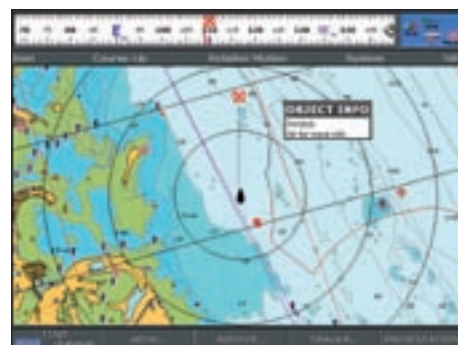
# Raymarine®



## A SERIES... SINGLE OR DUAL FUNCTION, THE CHOICE IS YOURS

Harness the power of Raymarine's advanced engineering and exclusive technologies with the new A Series dual-function displays. With A Series you can navigate like a pro using high resolution 2D or 3D\* and aerial photo charts, and you can target fish with unprecedented clarity using Raymarine's unmatched HD Digital sonar technology.

\* 3D and aerial photo charts only available with Navionics Platinum cartography (optional).



### POWERFUL CHARTPLOTTER

A Series chartplotters are available pre-loaded with Navionics charts that cover entire regions of Europe\*\*. These charts offer familiar paper-like cartography that's clear and easy to read at all zoom levels, user selectable safety contours and object information.

For even greater chart detail and features, upgrade to the optional Navionics Gold or Platinum charts.

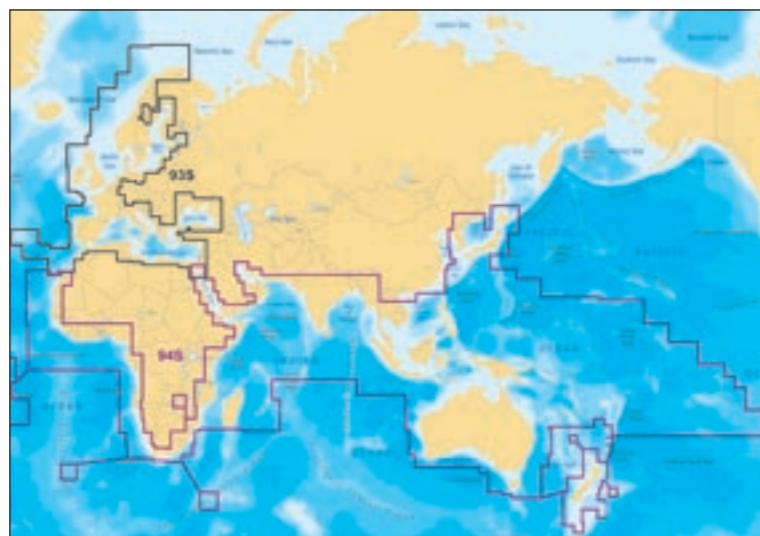
Chart upgrade features include:

- 3D and aerial photo chart navigation using optional Navionics Platinum.

\*\* Pre-installed Navionics cartography excludes Greenland and Iceland, Finnish and Russian Lakes, EU and Russian inland waterways. Rest of the world cartography excludes the coast of China.

### ENGINE MONITORING

Connect with NMEA2000 compatible engine instruments and trim tabs using Raymarine SeaTalk<sup>ng</sup> next generation data bus.



### AIS TARGET TRACKING

Transform any A Series chartplotter into an AIS (Automatic Identification System) display using the optional AIS250 receiver.

### CHART COVERAGE

945 Embedded Rest of the World cartography.

The pre-installed Navionics cartography is upgradable to Navionics Gold or Platinum cartography.



2 Year limited warranty

### A50 & A50b

Chartplotter only or dual-function Chartplotter and Fishfinder with 127mm (5") sunlight viewable VGA LCD display.



### A57b

Dual-function Chartplotter/Fishfinder with 144mm (5.7") sunlight viewable VGA LCD display.



### A70 & A70b

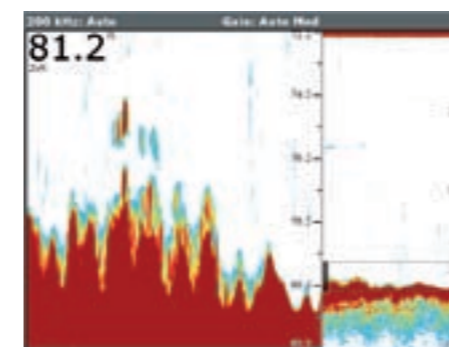
Chartplotter only or dual-function Chartplotter and Fishfinder with 162mm (6.4") sunlight viewable VGA LCD display.



### HD DIGITAL™ FISHFINDER

A Series chartplotter/fishfinders offer superior fish detection and bottom discrimination using Raymarine's unmatched HD Digital sonar technology. The HD Digital fishfinder built into the A50b, A57b and A70b instantly adapts to changing seabed and water conditions providing fully automatic "hands off" operation.

- P58 transom mount depth, speed and temperature transducer included. Ideal for small inboard / outboard boats.
- Dual Frequency 200/50 kHz (dual frequency transducer required).
- Auto Adaptive control of sensitivity, ping rate, and transmit power.



Typical HD Digital fishfinder screen.

### P58 TRANSDUCER

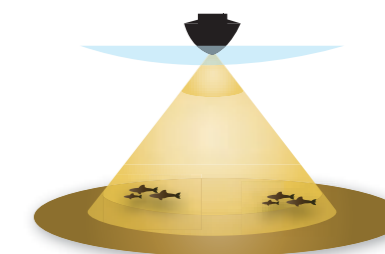
The A Series fishfinder version includes the plastic P58 tri-ducer.



### PREVIEW... ULTRA WIDE BEAM TRANSDUCER

Engineered for coastal, lake and river fishing the wider beam transducer delivers superior bottom coverage and fish detection.

- Ideal for targeting fish and bait in shallow water.
- 200 kHz frequency with a max depth of 92m (300ft).
- Built in temperature sensor.



HD DIGITAL™

### A Series Line Up

	A50	A50b	A57b	A70	A70b
LCD Display Size – mm (in)	127mm (5")	127mm (5")	144mm (5.7")	162mm (6.4")	162mm (6.4")
GPS/Chartplotter	•	•	•	•	•
HD Digital Fishfinder		•	•		•

# A | S E R I E S



Photo courtesy Glen Gall



Pre-loaded Navionics cartography for Aus / NZ

Internal high sensitivity GPS sensor

Waterproof construction to IPX6 standard

Dedicated function keys

Sunlight viewable LCD with integrated anti-glare filter

Built-in HD Digital fishfinder module on D versions

Compact flash reader port for optional Navionics chart cards

Tilt swivel bracket with quick release mechanism and integrated cable management system

Soft keys for selection of corresponding on-screen key functions



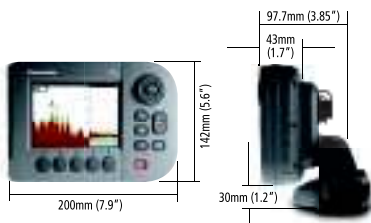
**SeaTalk<sup>ng</sup>**  
The Next Generation Data Bus



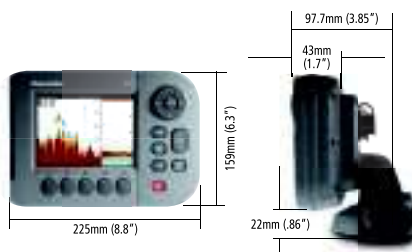
2 Year limited warranty

Additional information, specifications and interactive product tours available online at [www.raymarine.com.au](http://www.raymarine.com.au)

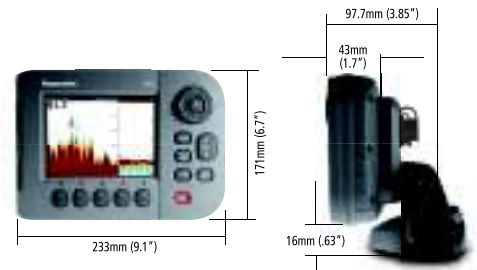
## A50/A50D DIMENSIONS



## A57D DIMENSIONS



## A70/A70D DIMENSIONS



## IMPORTANT INFORMATION

The technical and graphical information contained in this brochure, to the best of our knowledge, was correct as it went to press. However, Raymarine's policy of continuous improvement and updating may change product specifications without prior notice. Therefore, unavoidable differences between the product and this brochure may occur from time to time, for which liability cannot be accepted by Raymarine.

## Raymarine

Raymarine Asia Pty Ltd  
Suite 301  
2 Minna Close  
Belrose  
NSW, 2085  
Australia  
Tel. +61 (0)2 9479 4800  
Fax. +61 (0)2 9450 1255

Lifestyle photography supplied by: Malo Yachts; Glen Gall; Bella Boats; The Haines Group

**Raymarine<sup>®</sup>**  
[www.raymarine.com.au](http://www.raymarine.com.au)